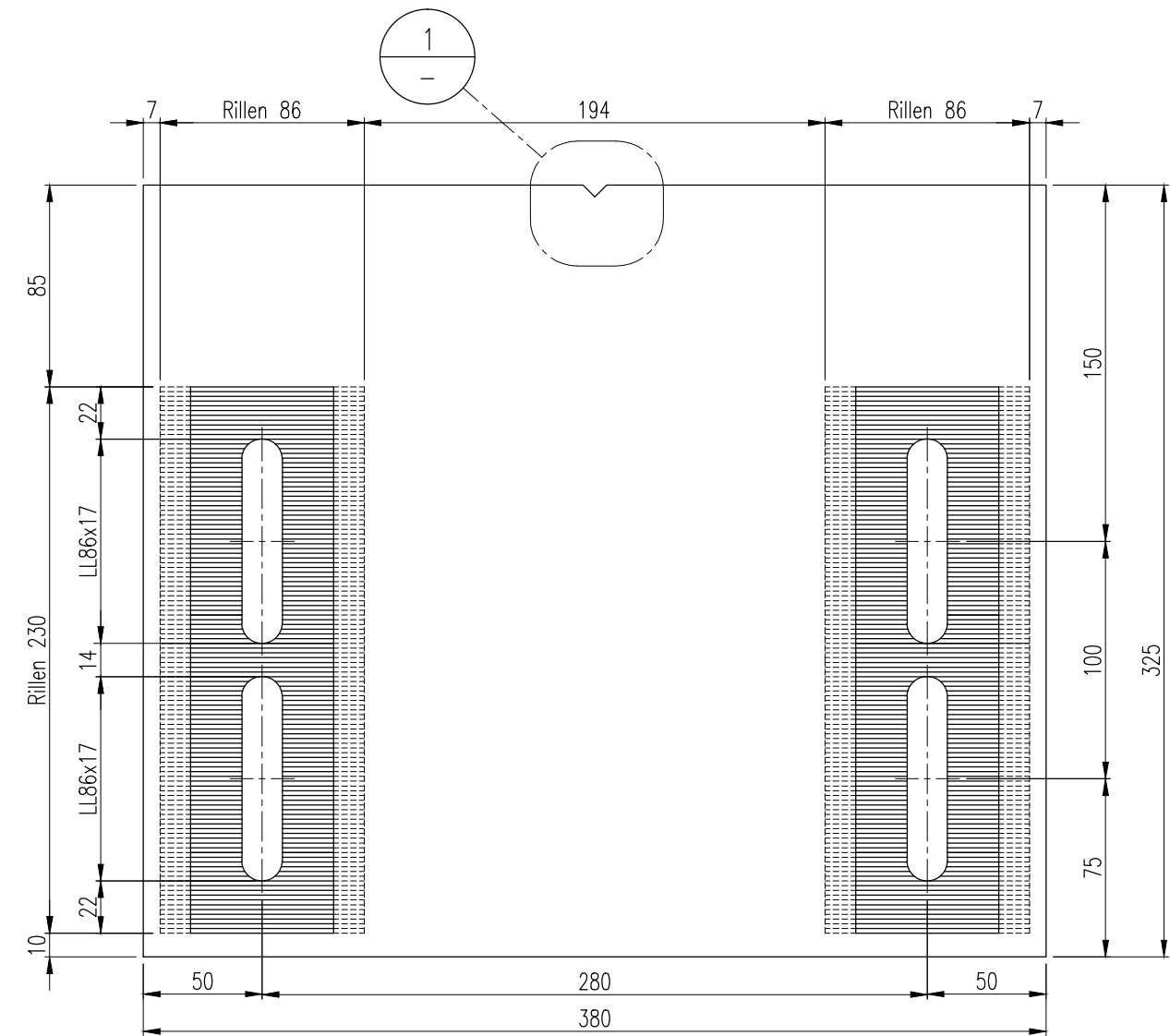
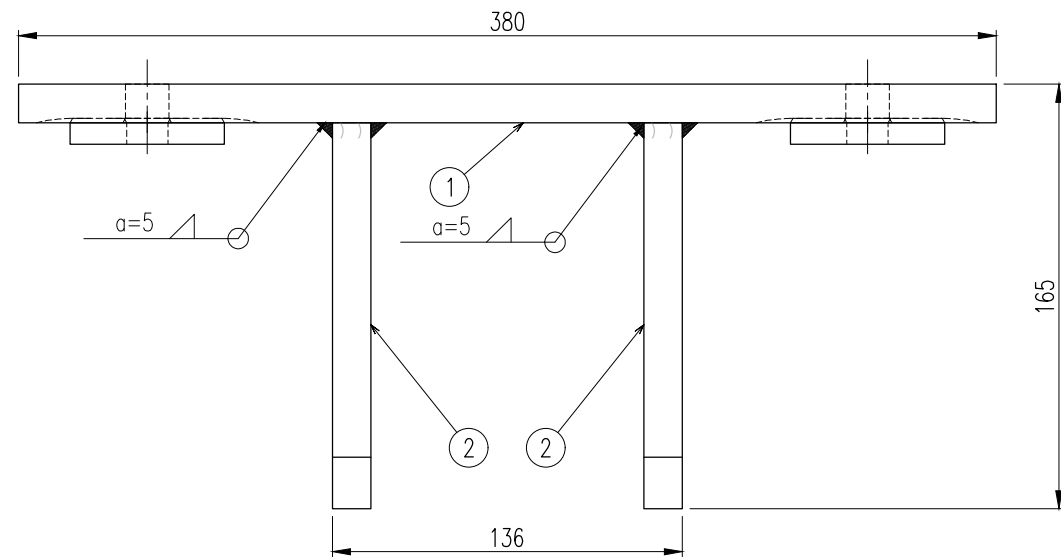
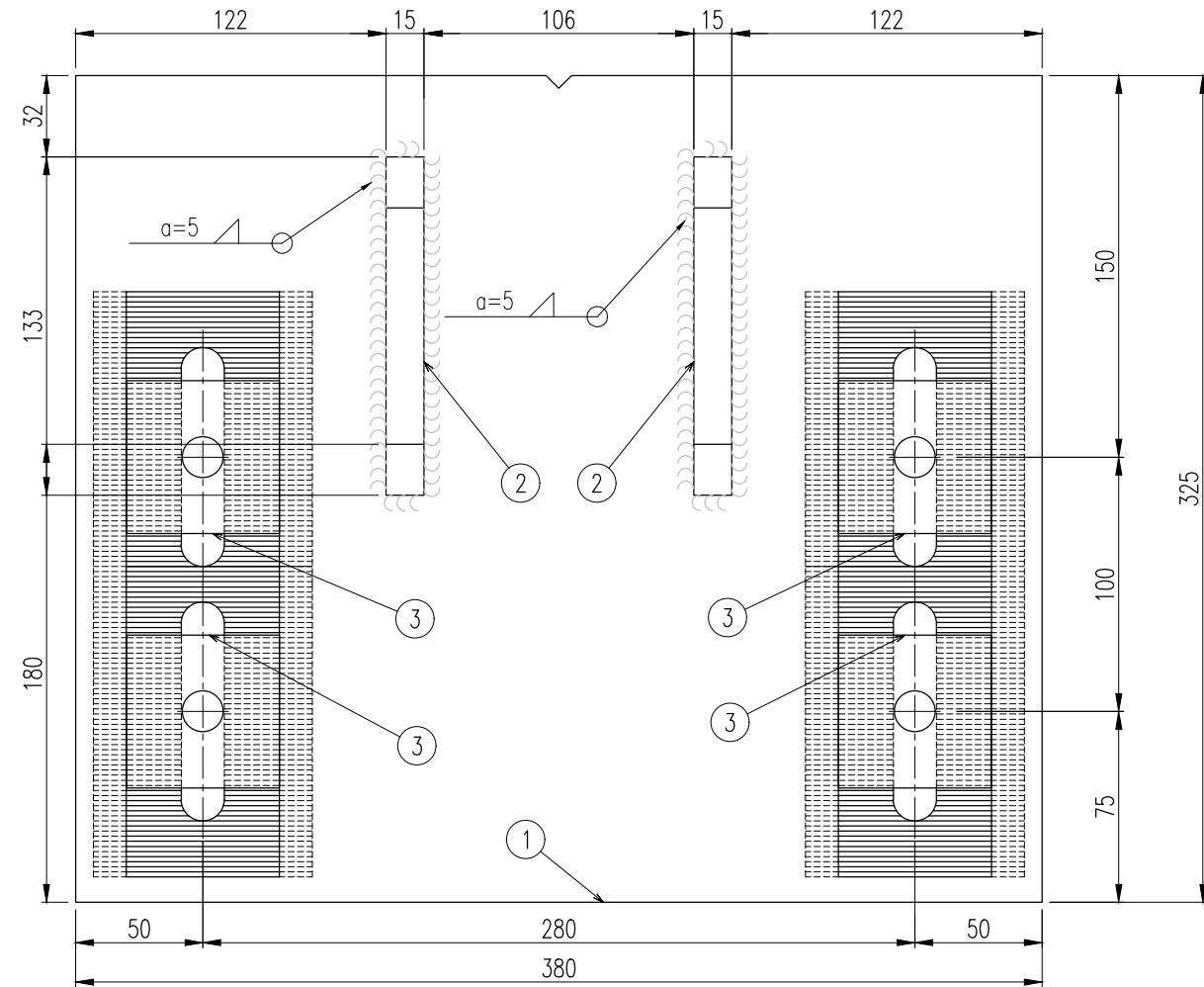
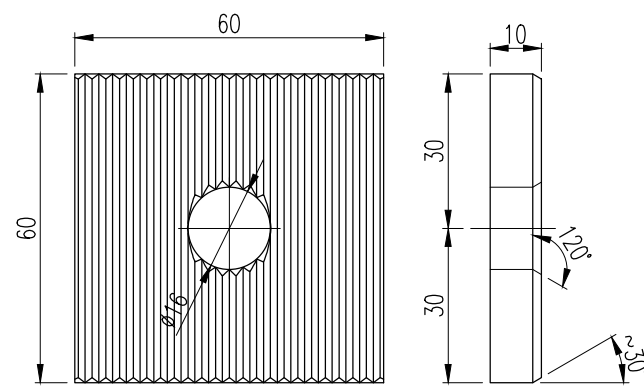


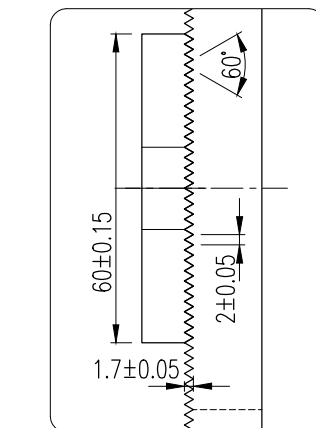
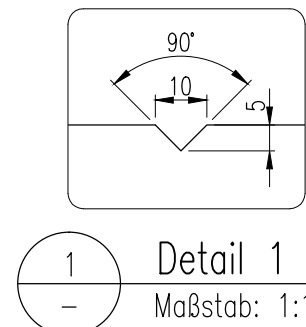
Teil 2
Maßstab: 1:2



Teil 1
Maßstab: 1:1



Teil 3
Maßstab: 1:1



Detail 2
Maßstab: 1:1

General tolerances for welded constructions DIN EN ISO 13920:1996											11/1996	
Tolerances for linear dimensions												
	2 to 30	over 30 up to 120	over 120 up to 400	over 400 up to 1000	over 1000 up to 2000	over 2000 up to 4000	over 4000 up to 8000	over 8000 up to 12000	over 12000 up to 16000	over 16000 up to 20000		
A:	±1.0	±1.0	±1.0	±2.0	±3.0	±4.0	±5.0	±6.0	±7.0	±8.0		
B:	±1.0	±2.0	±2.0	±3.0	±4.0	±6.0	±8.0	±10.0	±12.0	±14.0		
C:	±1.0	±3.0	±4.0	±6.0	±8.0	±11.0	±14.0	±18.0	±21.0	±24.0		
D:	±1.0	±4.0	±7.0	±9.0	±12.0	±16.0	±21.0	±27.0	±32.0	±40.0		
General tolerances for welded constructions DIN EN ISO 13920:1996												11/1996
Tolerances for angular dimensions in degrees and minutes												
	up to 400	over 400 up to 1000	over 1000 up to 2000	over 2000 up to 4000	over 4000 up to 8000	over 8000 up to 12000	over 12000 up to 16000	over 16000 up to 20000	* The value in mm/m corresponds to the tangent value of the general tolerance. It is to be multiplied by the length, in m, of the shorter leg.			
A	±20'	±15'	±10'	±10'	±10'	±10'	±10'	±10'				
B	±45'	±30'	±20'	±20'	±20'	±20'	±20'	±20'				
C	±110'	±45'	±30'	±30'	±30'	±30'	±30'	±30'				
D	±130'	±115'	±110'	±110'	±110'	±110'	±110'	±110'				
General tolerances for welded constructions DIN EN ISO 13920:1996												11/1996
Straightness, flatness and parallelism tolerances												
	over 30 up to 120	over 120 up to 400	over 400 up to 1000	over 1000 up to 2000	over 2000 up to 4000	over 4000 up to 8000	over 8000 up to 12000	over 12000 up to 16000	over 16000 up to 20000			
E:	±0.5	±1.0	±1.5	±2.0	±3.0	±4.0	±5.0	±6.0	±7.0	±8.0		
F:	±1	±1.5	±3.0	±4.5	±6.0	±8.0	±10.0	±12.0	±14.0	±16.0		
G:	±1.5	±3.0	±5.5	±9.0	±11.0	±16.0	±20.0	±22.0	±25.0	±25.0		
H:	±2.5	±5.0	±9.0	±14.0	±18.0	±26.0	±32.0	±36.0	±40.0	±40.0		
3	1	2	Steel Plate 10mm with serrations, HTV									
2	1	2	Steel Plate 10mm									
1	1	1	Steel Plate 10mm									
0	1	1	AS19107, Hot Dip Galvanized									
Pos.	Qty/ pcs	Qty/ total	Description									
DATE:	19.06.2014		DESIGNER:	J.Ibrishimov		-	-	-	-	-		
SCALE:	1 : 2 @ A1		DRAWING TITLE:	Example Bracket		-	-	-	-	-		
BRAIKO LTD			PROJECT NAME:	Rillen Standard		-	-	-	-	-		
117 Zolchar St., 1309, Sofia			PROJECT NR.:	140009		REV. DESCRIPTION	DRAWN	DATE	NR.			
Tel.: +359 (0) 421 55 50			CONTRACT NR.:	001		QUANTITY	1		UNIT pcs			
Fax: +359 (0) 421 55 50			WS PACKAGE NR.:	R01.07		REV.:	00		DWG Nr. AS19107			
Email: office@braiko.com												
Web: www.braiko.com												